

# JB Shout

for School of HONK

by Fred Wesley & the J.B.'s

♩ = 120 1

Flute

2

3

4

1 alt

2 alt

# JB Shout

for School of HONK

by Fred Wesley & the J.B.'s

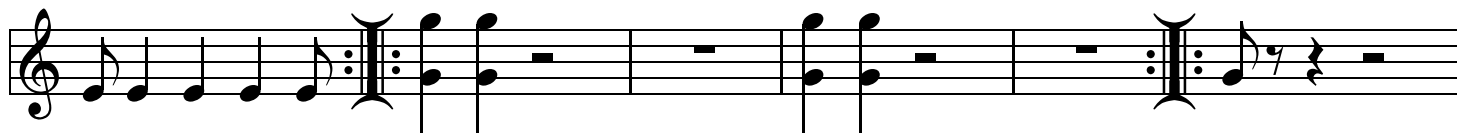
♩ = 120 1

Trumpet/Clarinet

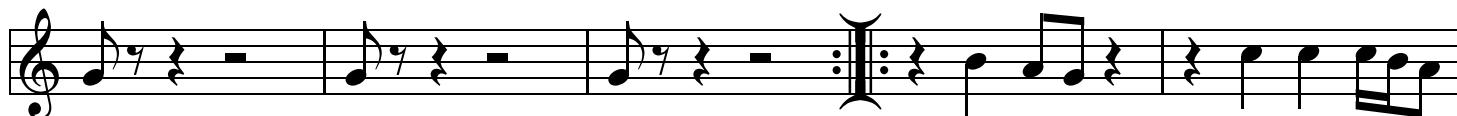


2

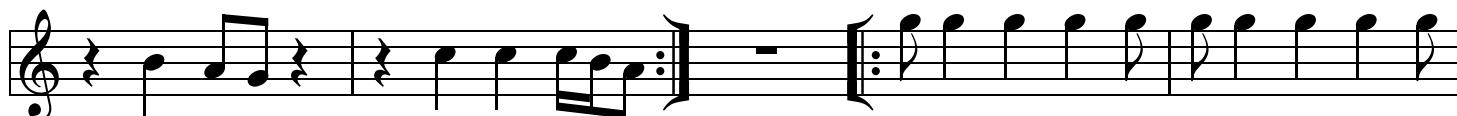
3



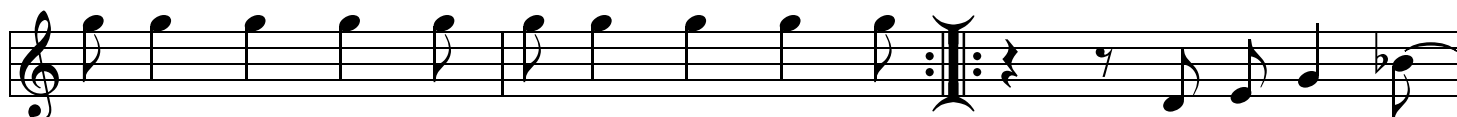
4



1 alt



2 alt



# JB Shout

for School of HONK

by Fred Wesley & the J.B.'s

♩ = 120 1

Alto Sax

# JB Shout

for School of HONK

by Fred Wesley & the J.B.'s

♩=120 1

Trombone

3 4 3 4

2 1 1 3 3 4

3 4 1 4 6 1 1 1 4 6 1 4 6

1 1 1 4 6 1 alt

2 alt

# JB Shout

for School of HONK

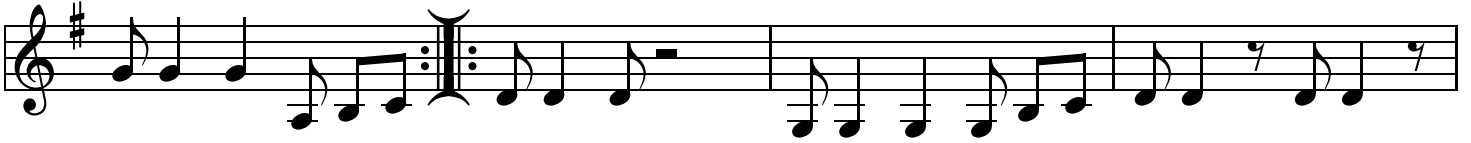
by Fred Wesley & the J.B.'s

$\text{♩} = 120$  1

Baritone Sax



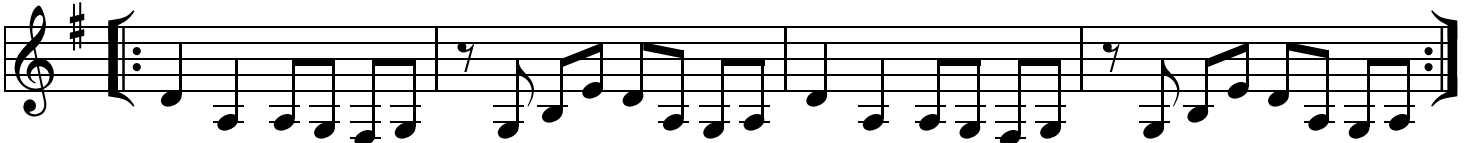
2



3

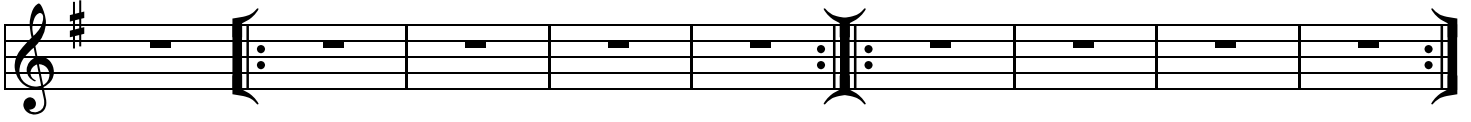


4



1 alt

2 alt



# JB Shout

for School of HONK

by Fred Wesley & the J.B.'s

♩=120 1

Tuba



2



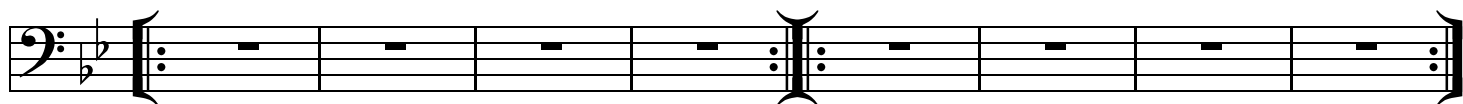
3

4



1 alt

2 alt



# JB Shout

for School of HONK

by Fred Wesley & the J.B.'s

♩=120

1

2

3

4

1 alt

2 alt

Snare

The musical score for the Snare drum part is written in 4/4 time with a tempo of 120 beats per minute. It consists of five staves of notation. The first staff begins with a double bar line and a 4/4 time signature. The notation includes quarter notes, eighth notes, and sixteenth notes, often with accents. There are four numbered first endings (1, 2, 3, 4) and two alternative endings (1 alt, 2 alt). The score concludes with a final double bar line and repeat sign.

# JB Shout

for School of HONK

by Fred Wesley & the J.B.'s

♩=120 1

Bass Drum



Measure 1: Bass drum notation in 4/4 time, starting with a double bar line and a repeat sign. The rhythm consists of quarter notes on the 1st and 3rd beats, and eighth notes on the 2nd and 4th beats.

Measure 2: Bass drum notation, starting with a double bar line and a repeat sign. The rhythm is identical to measure 1. A box with the number '2' is positioned above the first measure.

Measure 3: Bass drum notation, starting with a double bar line and a repeat sign. The rhythm is identical to measure 1. A box with the number '3' is positioned above the first measure.

Measure 4: Bass drum notation, starting with a double bar line and a repeat sign. The rhythm is identical to measure 1. A box with the number '4' is positioned above the first measure.

Measure 5: Bass drum notation, starting with a double bar line and a repeat sign. The rhythm is identical to measure 1. A box with the text '1 alt' is positioned above the first measure.

Measure 6: Bass drum notation, starting with a double bar line and a repeat sign. The rhythm is identical to measure 1. A box with the text '2 alt' is positioned above the first measure.



